

SMALL WIRELESS SITE LICENSE APPLICATION

Name of Applicant (Company):	Date of Application:
Company Representative:	Title:
Phone Number:	Email:
Emergency 24-hour Contact Information:	Antenna Site Name, Number:
Antenna Site Address: (Provided by City of Maricopa, if requesting to attach to a City asset)	Proposed Term of Site License:
Carrier Customer for this Location:	Billing Contact Information:
Letter of Credit on File w/City: (yes or no)	

The FCC requires licensees to comply with RF exposure limits defined in 47 CFR § 1.1310. Based on additional guidance contained in the IEEE C95.1 2005 Standard, a practical guideline for eliminating the need to assess when the FCC Public limit may be exceeded at a site is to determine if the RF power of the transmitter(s) is greater than 5.6 Watts RMS (cumulative) into any single antenna (including multi-band antennas).

If the proposed Small Wireless Facilities (SWF) has a transmitter(s) greater than 5.6 Watts RMS (cumulative) connected to a single antenna (including multi-band antennas) that is placed in ROW, an RF exposure assessment must be provided with the application.

The information identified in the RF exposure assessment will assist staff in evaluating any inquiry regarding a facility's compliance with the RF exposure guidelines.

Does this site require an RF exposure assessment?	Licensed Radio Service (Please include call sign(s)):
Height above ground of the lowest point of the antenna:	Antenna Type(s) model number & dimensions:
Proposing Unlicensed Frequencies: (Yes or No)	Operating Frequency(ies):
Site Deactivation Contact:	Emergency Contact:
Proposed site RF power in Watts (Maximum RF power into each antenna/technology RMS):	

For proposed facilities requiring an RF exposure assessment (Site transmitter(s) exceed 5.6 Watts RMS) include the following:

RF exposure assessments for SWF attached to utility poles or any other structures not owned by the Licensee, shall graphically illustrate in three dimensions the worst-case exposure levels that exceed FCC limits for service personnel accessing the area near the SWF exposure zones. If the graphic illustration exceeds the FCC exposure limit in any area accessible to workers who would work on maintenance or repair to the adjacent traffic signals, lights, or utility wiring on the utility pole, a narrative must be supplied containing all the information required to provide an RF Safety plan to protect workers from RF exposure above the FCC limits.

If the SWF transmitter power is modified to produce a significant change (> 5% RMS transmitter power) the Licensee must provide an updated "SWF Site RF Exposure Assessment" to be included in the City's RF Safety Program.

Provide a photograph or drawings, as illustrated in figure 1 for the proposed (or existing) site installation clearly identifying the exact location where the applicant's transmitting antennas will be installed. Circle or highlight the antenna location with a contrasting color for identification (especially for antennas hidden behind screens, canisters and facades).

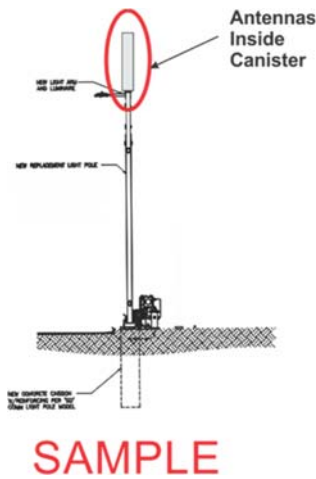


FIGURE 1

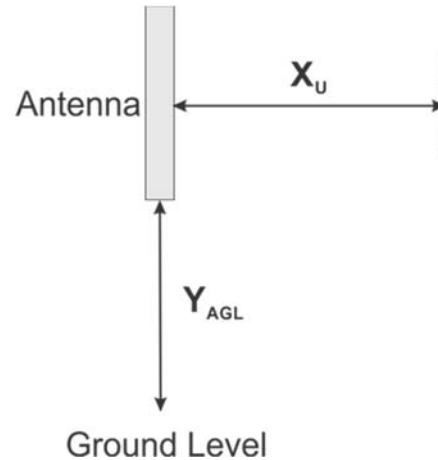


FIGURE 2

Provide a worst case analysis (maximum transmit power, cumulative of all transmitters and frequencies to be utilized) to determine the maximum distance that the FCC MPE limits (Uncontrolled) may be exceeded from any antenna(s) installed at this site.

Table 1

Item	Dimension	Provide Results For	Distance in Feet
1	X_U	Maximum distance from the antenna that the FCC Uncontrolled (Public) MPE limit could be exceeded	
2	Y_{AGL}	Antenna height above ground level measured from the bottom of the antenna	

Applicant certifies that the Site RF Exposure Assessment on this form is based upon one of the following (check box):

- Prediction equations contained in F.C.C. OET Bulletin 65, Section 2
- Computer software analysis (please describe modeling software used)
- Other (include brief description)

Include supporting documentation with the application.

I hereby agree that I read the application form:

The information in this document is intended only to be a general guide to the small wireless site license process. This section is intended to comply with A.R.S. § 9-591, et seq. Applicant to pay special attention to Maricopa's Engineering and Design Standards and the Small Cell Terms and Conditions. The "Small Cell Wireless Site License" will be an addendum to the "Small Cell Wireless Terms and Conditions."

The City may retain outside experts to assist in the review and processing of applications. All reasonably related costs for such experts shall be charged in addition to the application fee listed in City's Schedule of Fees.

Existing verticality will be available to the applicant on a first in permit queue order as submitted using City's SmartGov on-line permit application system. City staff will not "save" or "tag" verticality for any proposed or future sites. The verticality will be approved for the first applicant that submits a completed application free from errors.

SWF that do not meet A.R.S. § 9-591, et seq. definitions will be evaluated on a case-by-case basis with different licensing, design components and fee schedules.

Applicants shall complete the "Small Wireless Site License Application" and the "Right of Way Application" using Maricopa's SmartGov on-line permit application system. SmartGov help can be found at <https://ci-maricopa-az.smartgovcommunity.com>